

Mapping two classification schemes – DDC and SAB

Presentation at the
International Symposium in Honour of Magda Heiner-Freiling,
April 10, 2008, Deutsche Nationalbibliothek

Magdalena Svanberg, National Library of Sweden

Outline

- Background - the Swedish feasibility study on a Swedish switch to DDC.
- Mapping SAB to DDC – DDC in the national bibliography of Sweden.
- Correspondence mapped DDC numbers / manually applied DDC numbers.
- The future.

A feasibility study on a Swedish switch to DDC

- Part of a Catalogue study conducted in Sweden 2006.
- Mission:
investigate what implications a switch to DDC would have for National Library and other Swedish research libraries.
- Summarising the study there is a lot to be said for a switch to DDC
- Outstanding questions:
 - The practical implications, i.e. shelving.
 - Funding of the project.
 - The public libraries?
- No formal decision yet.

Mapping SAB to DDC

- DDC in the national bibliography of Sweden

- Goal:
- A DDC arranged monthly list of the National bibliography of Sweden.
- Based on mapping, not to cause cataloguers extra work.
- A previous SAB arrangement was used as the basis for the mapping, since the present one contains many errors and is not divided according to literary warrant.
- About 650 SAB notations.
- Works with added SAB notations are listed under several captions.

SAB classification scheme

- Enumerative classification scheme, with possibilities for notation building, i.e. by adding general subdivisions to express time, place and form.
- Alphanumerical notation with letters as the main notation.
- 25 main classes based on disciplines and fields of study.
- Mainly hierarchical.
- Several notations can be used. Often lacking instructions on which notation to prefer.



Mapping a SAB notation to a DDC number

- Map each SAB notation to only one DDC number.
- Mapping made to as complete DDC numbers as appropriate, since the level of division in the DDC presentation has not been decided yet. They will be shortened as needed later on.
- Marking of mappings as being exact or not. Made for future needs.
- Sources
 1. WebDewey.
 2. The conversion table DDC-SAB.
 3. Bibliographic records in the Swedish union catalogue LIBRIS and WorldCat. (as needed).



SAB till Dewey - Träfflista

Sökterm s gav 219 träffar. [Logga ut](#)

DEWEY	SAB	
322.5	<u>S</u>	
350	<u>S</u>	
355	<u>S</u>	
355.03	<u>S</u>	
355.07	<u>S</u>	
355.1	<u>S</u>	(.03)
355.2	<u>S</u>	
355.223	<u>S</u>	
355.31	<u>S</u>	
355.35	<u>S</u>	

Rubrik och innehåll

Nästa >> [Ny sökning](#)

Spindeln KB Kungliga biblioteket Webbhumlan

Träfflista OCLC Connexion Länkar

OCLC Connexion Home | Help | Diacritics | Co

Dewey Services General OCLC

Search Browse Create Show

Search Options * WebDewey Create Options Show Options

Search Browse military science in Relative Index Quick Browse Search History

Browse Results Record 1 of 1

Class Number: 355
Caption: Military science

Browse Tables Creat Notes

[Main Classes](#)

- 300 [Social sciences](#)
- 350 [Public administration & military science](#)
- 355 **Military science**
 - 355.001 [Philosophy and theory](#)
 - 355.002 [Miscellany](#)
 - 355.003-355.005 [Standard subdivisions](#)
 - 355.006 [Organizations](#)
 - 355.007 [Education and related topics](#)
 - 355.008 [History and description with respect to kinds of persons](#)
 - 355.009 [Historical, geographic, persons treatment](#)
 - 355.02-355.07 [Basic considerations of military science](#)
 - 355.1 [Military life and customs](#)

Start OCLC Connexion - M... 2 Microsoft Office O... Microsoft PowerPoint ... Mapping Two Classific... SV

Choice of DDC number

1. Number for comprehensive or interdisciplinary works.

- SAB notation **Fo (Greek and latin)** is mapped to **480 (Classical & modern Greek languages)**.
“Class here comprehensive works on classical (Greek and Latin) languages”

2. Number covering most of the published books.

- SAB notation **Ad (Publishing and book trade)** could be mapped both to **070.5 (Publishing)** and **381.45002 (Bookselling)**. Most of the published books are covered by **070.5**, and that number has been chosen.

Some problems... – and solutions

- Problem:
No satisfactory mapping at all.
- Solution:
The closest correspondence available.
- Example:
Ohah (Employers' associations) is mapped to 331.8 (Labor unions, labor-management bargaining and disputes).

- Problem:
Some classes were SAB and DDC differ a lot. One of the schemes keeps together what the other scatters and vice versa.
- Solution:
Staying on a general level in the mapping.
- Example:
Works on higher education in medicine (or another specific subject.)
In SAB: **Epabv**
(Epab+V Education - methods in higher education + Medicine)
In DDC: **610.711**
(610+0711 Medicine + Higher education).

- Problem:
What is an exact mapping?
Can a mapping be exact on a broad level if it differs deeper down in the hierarchy?
- Solution:
Being pragmatic and marking mappings as exact even if they are not really exact, strictly speaking.
- Example:
SAB class **K (History)** is marked as an exact mapping to **900 (History and geography)**, but works in DDC division **910 (Geography & travel)** is actually classed in **N (Geography)** and **920 (Biography and genealogy)** is in **L (Biography and genealogy)**.

- Problem:
No exact match to SAB in DDC on one notational level with a closer correspondence on a deeper hierarchical level
- Solution:
Subordinate SAB notations have been added and mapped to DDC. These notations will not be shown in the SAB arrangement of the monthly list, but only work in the background.
- Example:
SAB notation **BI (Controversial phenomena)** is mapped to **001.9 (Controversial knowledge)** following an instruction on interdisciplinary works. Some subclasses of **BI**, i.e. **Bib (Occultism)** and **Blc (Divinatory arts)** are mapped to DDC numbers in **130 (Parapsychology and occultism)**

Mapped DDC numbers in comparison with DDC numbers in bibliographic records

- Comparison of the DDC numbers achieved through mapping from the SAB notation with the manually assigned numbers.
- Sample of nonfiction published in 2007 classed both with SAB and DDC.
 - Translations between Swedish and
 - English,
 - French,
 - German,
 - Italian
 - Norwegian
 - Works in English with holdings on eight libraries or more in LIBRIS
- Sources:
 - LIBRIS
 - WorldCat
 - NorBok – the Norwegian National Bibliography

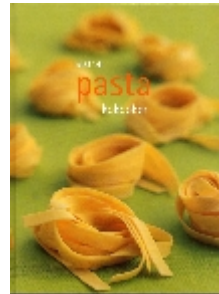
7 categories

- Matching 3 digits or more
- Matching 2 digits
- Matching 1 digit
- Matching 3 digits or more of the DDC number for the added notation
- Matching 2 digits of the DDC number for the added notation
- Matching 1 digit of the DDC number for the added notation

- No matching

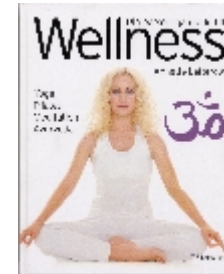
Varying ends of numbers

- Mapping:
SAB **Qcaa (Cooking)** = DDC **641.5 (Cooking)**
- Example:
The essential pasta cookbook.
SAB notation: Qcaae
DDC number: 641.822
- Categorization:
Matching 3 digits or more



Added notations

- Mappings:
SAB Ra (**S**ports, **p**lay and **g**ames) = DDC 796.44 (**S**ports **g**ymnastics).
SAB Rai (**Y**oga) = DDC 613.7 (**P**hysical **f**itness)
- Example:
Lefterow, Annette: Din personliga guide till wellness
SAB notations: Rag; Rai
DDC number: 613.7
- Category:
Matching 3 digits or more of the DDC number of a added SAB notation



Categorisation - example

- Mapping:
SAB G (Literature) = DDC 800 (Literature)
- Example:
Burroughs, Augusten: Running with scissors
SAB notation: Geqz Burroughs, Augusten
DDC number: 813.6
- Category:
Matching 3 digits or more

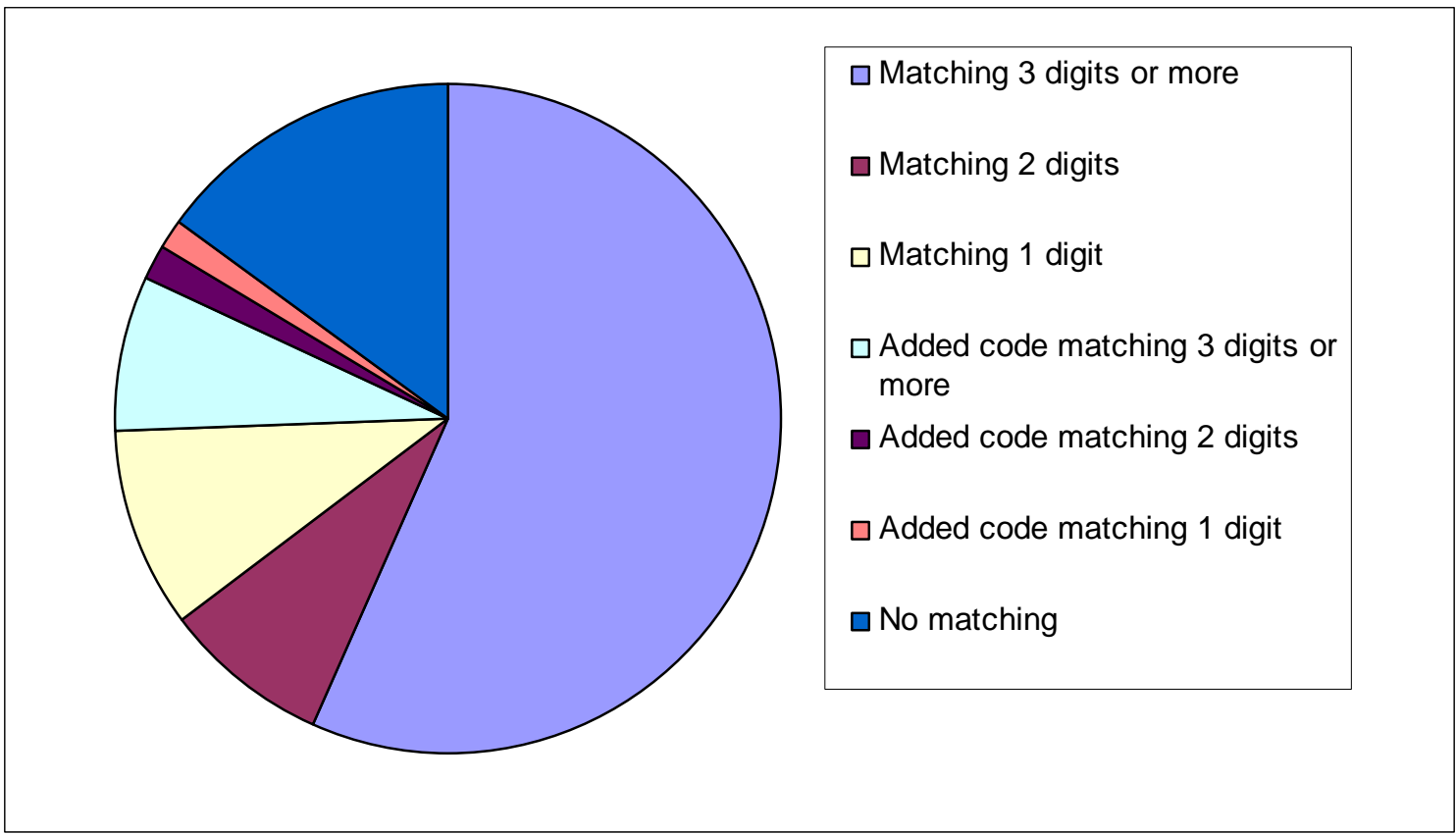


Categorisation - example

- Mapping:
SAB Obb (Peace and disarmament) = DDC 327.172 (Promotion of peace and international order)
- Example:
Wallenstein, Peter: Understanding conflict resolution : war, peace and the global system
SAB notation: Obba
DDC number: 303.69
- Category:
Matching 1 digit



Mapped DDC numbers compared to DDC numbers in bibliographic records



Perfect matches

- **SAB Qcaf (Beverages) = DDC 641.874 (Alcoholic beverages)**

Biggs, David: The cocktail handbook.

Olsson, Björn: Drinkar för alla festliga tillfällen

Reed, Ben: Hangover cures.

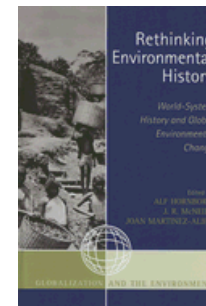
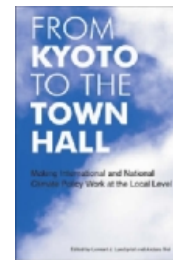
Reed, Ben: Party cocktails.



Theme with variation

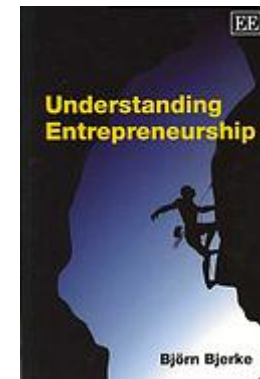
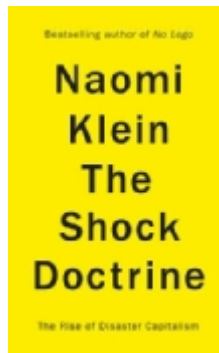
- **SAB Uh (The environment and nature conservation))** is mapped to DDC number **333.7 (Land, recreational and wilderness areas, energy)**
Examples with SAB notation Uh

- From Kyoto to the town hall : making international and national climate policy work at the local level
DDC number: 333.7
- Rethinking environmental history : world-system history and global environmental change
DDC number: 333.7
- State of the world 2007 : our urban future : a Worldwatch Institute report on progress toward a sustainable society
DDC number: 338.95
- Tell, Johan: 100 sätt att rädda världen
DDC number: 363.737



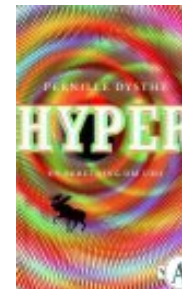
Borderline variation

- **SAB Qa (Economics and finance) = DDC 330 (Economics)**
SAB Qb (Management) = DDC 650 (Management and public relations)
 - Klein, Naomi: The shock doctrine
SAB notation: Qaabm
DDC number: 330.122
 - Karlöf, Bengt: Om organisation.
SAB notation: Qbaab
DDC number: 658.406
 - Bjerke, Björn: Understanding entrepreneurship
SAB notation: Qba
DDC number: 338.04



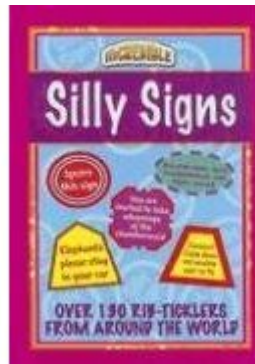
(Almost) no matching at all

- **SAB Lz (Special persons) = DDC 920 (Biography & genealogy)**
- One match:
 - McCourt, Frank: Angela's ashes.
SAB notations: Lz McCourt, Frank; He.01=c
DDC number: 929.20899162073
(Family histories + Irish people + United States)
- About 80 mismatches:
 - Bernstein, Carl: A woman in charge.
SAB notation: Lz Clinton, Hillary Rodham
DDC number: 328.73092
(Legislative bodies + United States + 092)
 - Dysthe, Pernille: Hyper.
SAB notation: Lz Dysthe, Pernille; Vef
DDC number: 616.85890092
(Attention deficit disorder with hyperactivity + 092)
 - Briscoe, Constance: Ugly.
SAB notation: Lz Briscoe, Constance
DDC number: 362.76092
(Abused and neglected children + 092)



Rule with exceptions

- **SAB Qbm (Advertising and PR) = DDC 659 (Advertising & public relations)**
- Silly signs
SAB notation: Qbm
DDC number: 808.87



Ending the DDC in the National Bibliography project?

- Total makeover of the monthly list of the National Bibliography.
- Other solutions for presenting new books?

- Corrections in the conversion table.
- Systematical revision of the table.
- Markings of exactness.
- Use the conversion table for other purposes: cross searching, shelving...

The future

- The Expert group for the LIBRIS union catalogue works with questions concerning cataloguing.
- One of the main objectives of the group is to continue the work with the most important questions of the catalogue study, among them the question of a Swedish switch to DDC further.
- Revision of the conversion table.
- Pilot study of the mixed translation model.
- Investigate practical implications, i.e., shelving further
- Initiate development of tools for cross searching and presenting DDC classed and SAB classed material together.
- Fund raising.
- Initiate discussion on a switch to DDC among the public libraries.



Thank you for your attention!

Magdalena Svanberg
National Library of Sweden
National Co-operation department
magdalena.svanberg@kb.se