

FiksFerdig

Delivering pre-labeled books for faster processing

Elise Conradi, Biblioteksentralen
EDUG 2023
April 25, 2023



Biblioteksentralen is a **non-profit cooperative** owned by Norway's counties and county municipalities.

We were established in 1952 to **help libraries** provide knowledge and culture to everyone in Norway.

All returns are **invested in the development** of services and products for libraries.

Biblioteksentralen shall contribute to the increased use of libraries



Forenkle hverdagen til
bibliotekansatte

Ease the workload of the
LIBRARY STAFF



Utvikle tjenester som svarer på
behovene til bibliotekbrukere

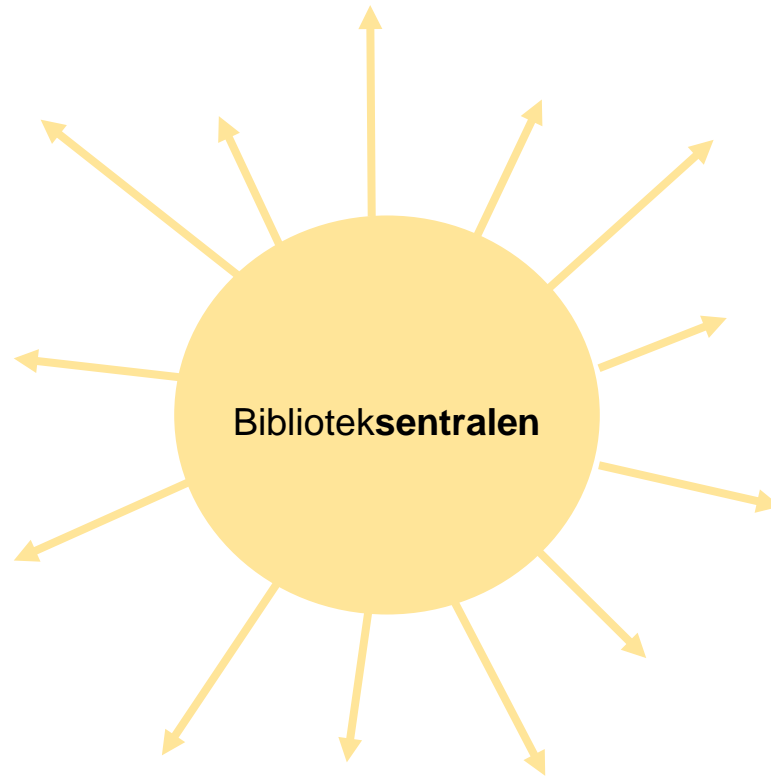
Develop services that
answer the needs of
LIBRARY USERS



Muliggjøre deling av informasjon og
inspirasjon på tvers av bibliotekene

Contribute to SHARING of
information and inspiration
across libraries

Delivering books, metadata and other services to public and school libraries since 1952

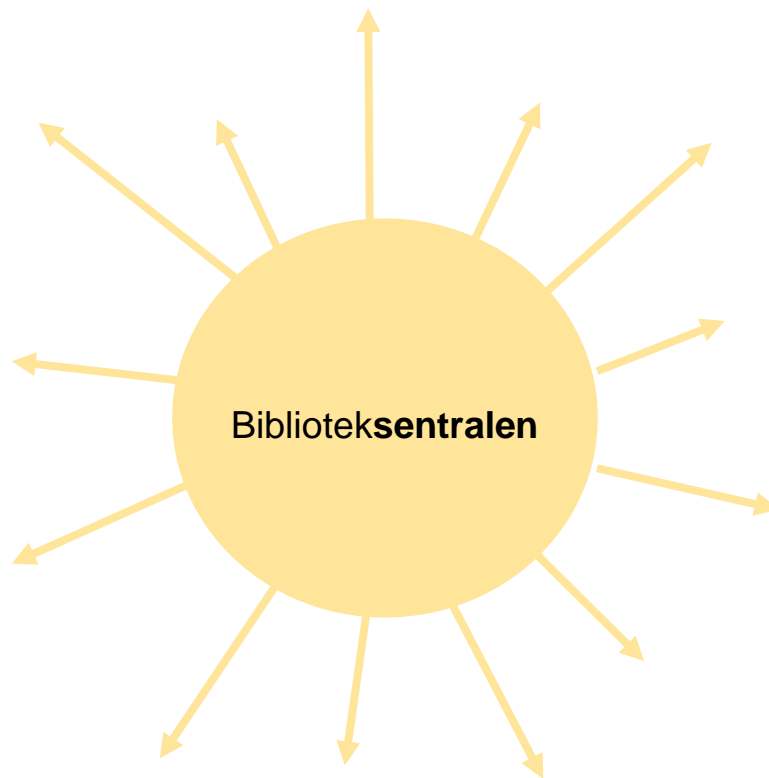


Perceived problem

- Libraries have limited resources (staff, time)
- A lot of resources are spent processing books
 - ca 10 minutes per book (1500 books = 6,5 work weeks)
- This leads to an unnecessarily long wait for some books to be made available and reach users

Processing

- Receive book
- Check it into library system
- Check/modify/register metadata
- Print labels
 - Back label
 - Spine label
- Program RFID-tag
- Affix labels, RFID-tag, other shelf markings
- Shelf book

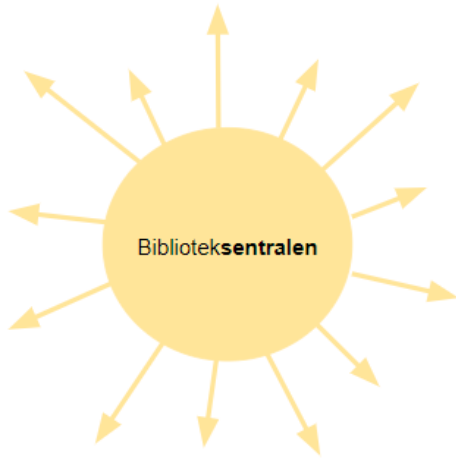




Biblioteksentralen

Hylleklare bøker (Shelf-ready books)

established in 2018

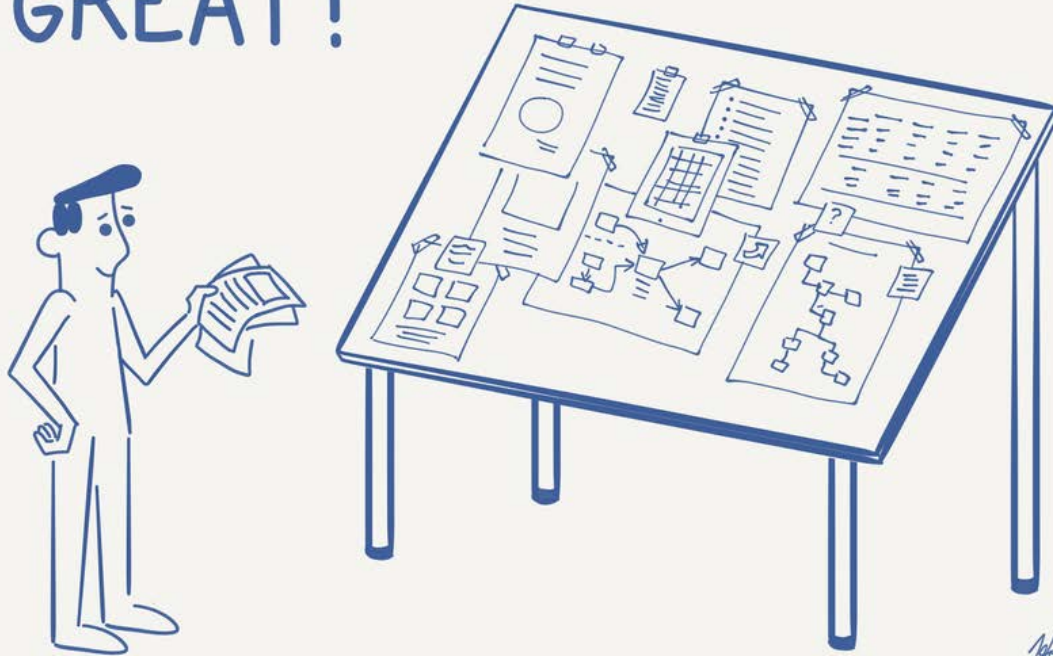


- Integration with library systems to connect catalog record to item
- Labels created with call numbers from database
- Libraries could modify call numbers during ordering process

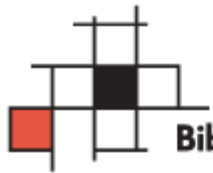
Hylleklare bøker (Shelf-ready books)

established in 2018
and abandoned in 2020

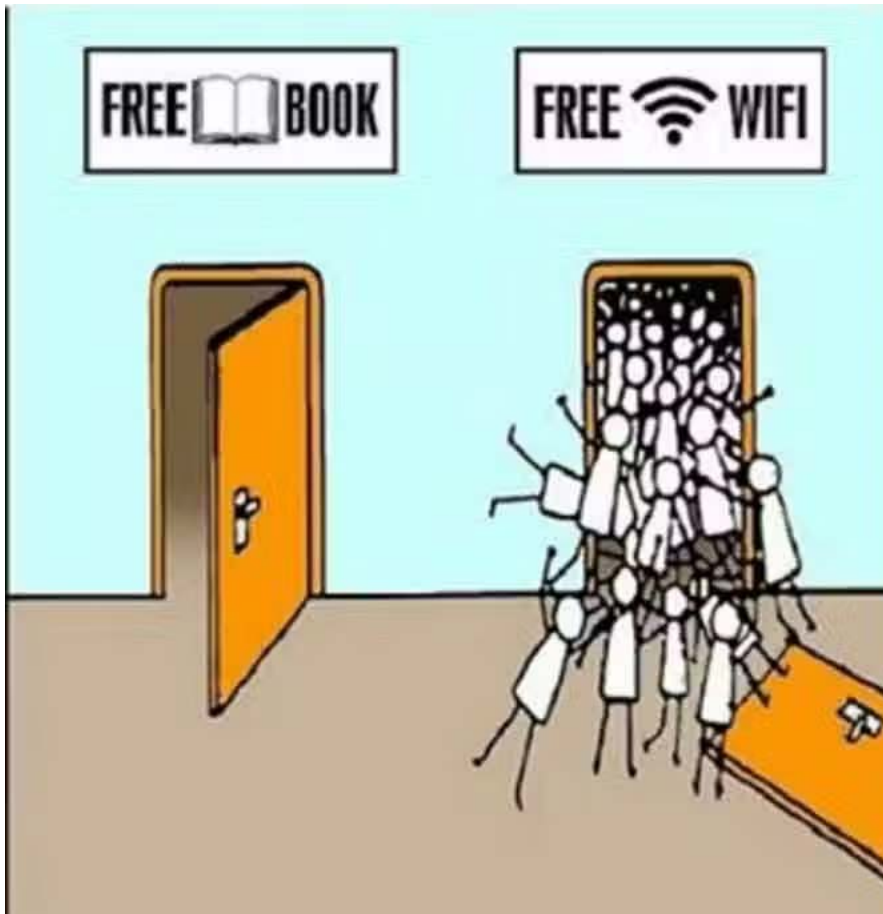
Back to the drawing board...
... GREAT!



Horie M.



Biblioteksentralen



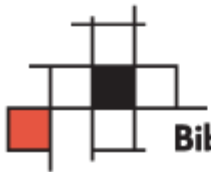
TRADITIONAL



MODERN

Keywords:
Agile
Service design
Usability testing

...



Biblioteksentralen

FiksFerdig (Shelf-ready books)

established in 2021

Product!

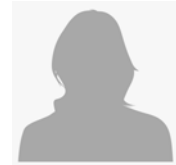
Service!



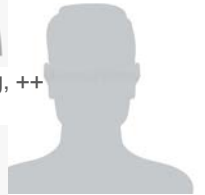
Product Owner



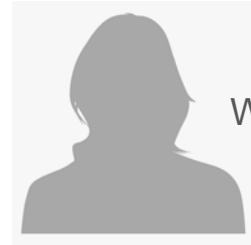
Service Designer



Sales, marketing, ++



Warehouse



Metadata



Me

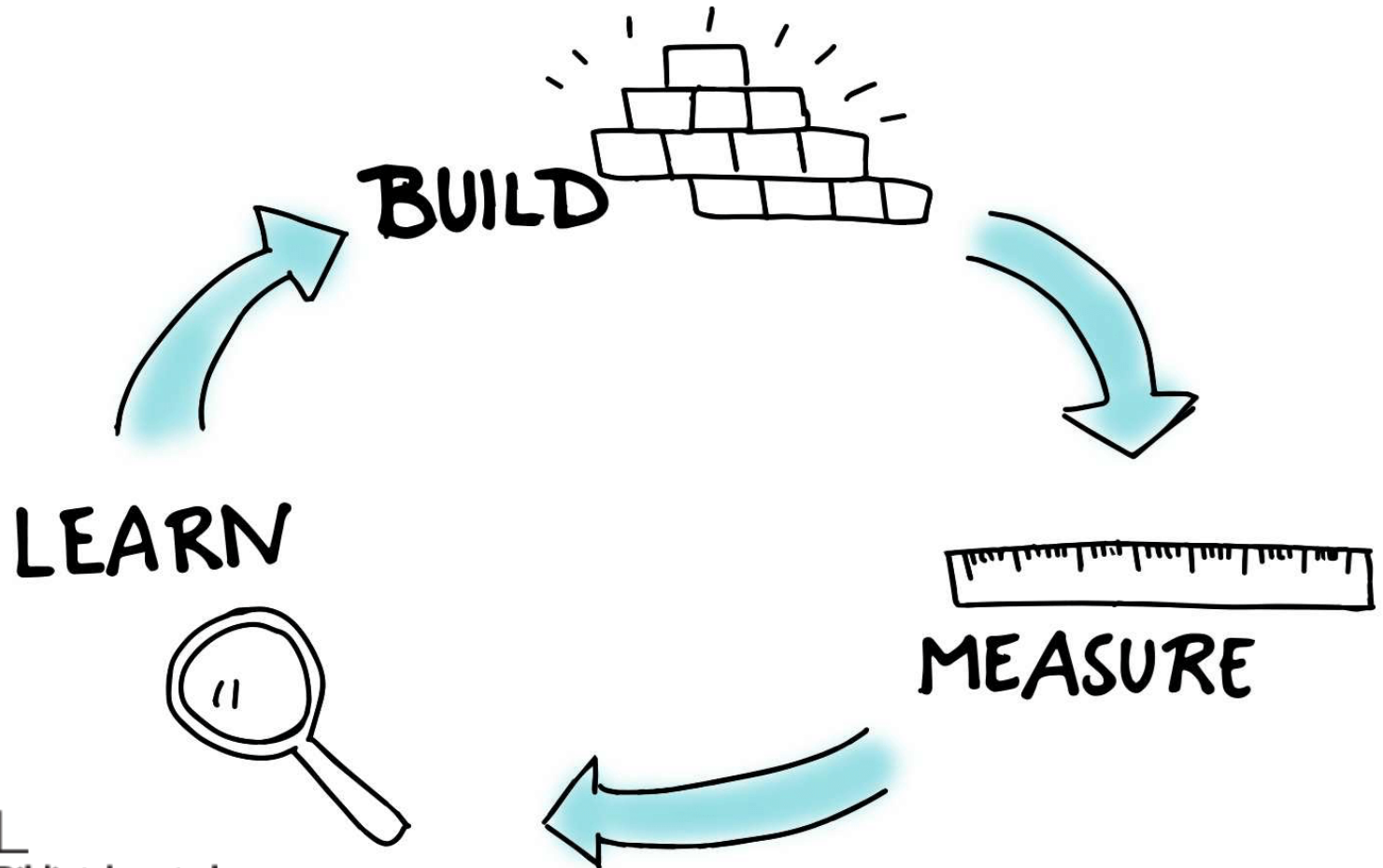
Goal:

Create a product that is useful to
librarians (and users?)!

Find the least common denominator of information necessary for the back and spine of books to provide a flexible, standardized, intuitive and scalable system for shelving (and browsing and mediating?) books

Understanding the problem

- Pilot libraries (3-5)
 - Interviews: What are their needs? What is most pressing?
 - Observation of processing (over Teams)
- In-house
 - What types of metadata are registered?
 - Where are they stored?
 - How are they sent to library systems?
 - How are they modified?
 - Warehouse logistics






LEARN (Dewey)

- How do public libraries use the Dewey system in shelving?
- How do they modify Dewey?
- Where do they depart from Dewey?
- What are the most common subject areas that get their own shelves?
 - Cooking
 - Hobbies
 - Photography
 - Biographies
 - Dinosaurs
 - etc

BUILD (Dewey)

									
000	100	200	300	400	500	600	700	800	900
AIK	AIK	AIK	AIK	AIK	AIK	AIK	AIK	AIK	AIK
Nynorsk	Nynorsk	Nynorsk	Nynorsk	Nynorsk	Nynorsk	Nynorsk	Nynorsk	Nynorsk	Nynorsk

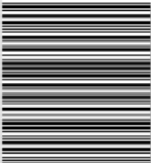

		
333	333	333
.8	.95	.952
		09
NGU	ULL	ALK
Nynorsk	Nynorsk	Nynorsk

Fag_barn

	BIBLIOTEK NAVN	dewey + evt person		
		Forfatter / tittel	Utgivelsesår	
		Målgruppe	Aldersspenn	

dewey
språk

Fag_barn_eksempel

	DRAMMEN BIBLIOTEK	782.42164		
		Bing, Just	2021	
		Ungdom	13-16+	

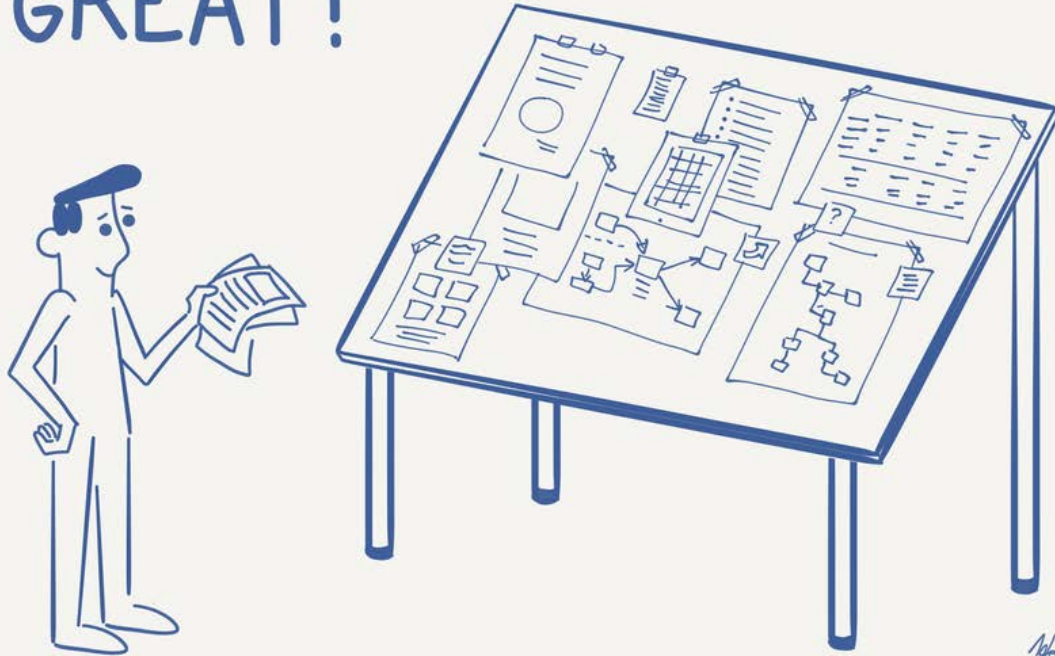
782
.4216-
bokmål

MEASURE (Dewey)

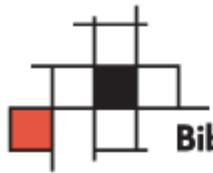
Selected feedback from pilot libraries:

- Symbols can become outdated quickly
- Symbols don't work well for all subdisciplines in Dewey (for example Cooking in 600)
- It was difficult to read the Dewey notation divided into three digits over three rows
- In some cases, not detailed enough

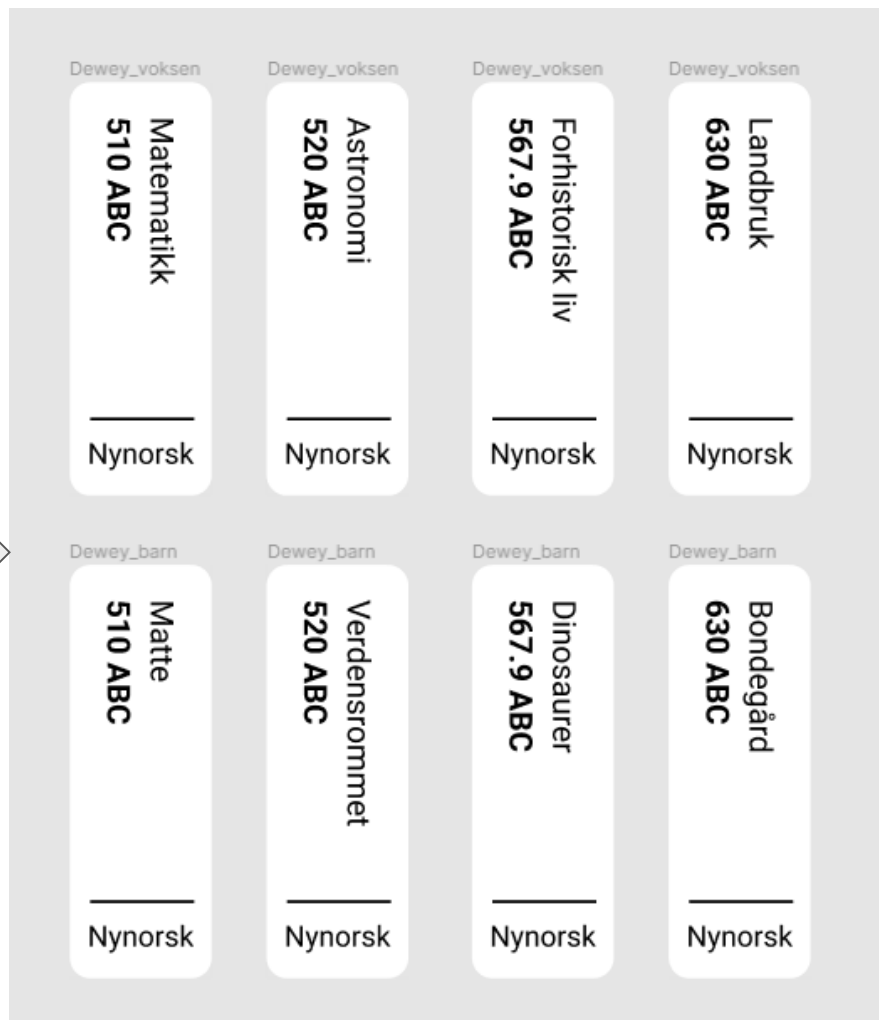
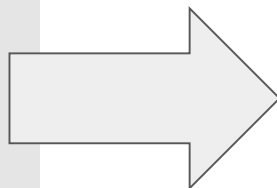
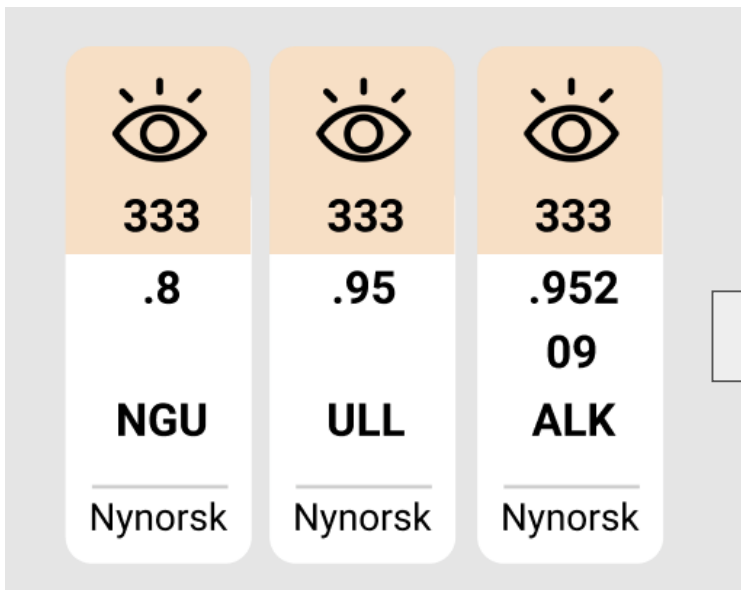
Back to the drawing board...
... GREAT!



Horie M.



Biblioteksentralen



Curated captions

- Captions for 159 number spans
- Differentiate between captions for adults non-fiction and children non-fiction
- Examples:

520-529

Astronomy (adults)

520-529

Outer space (children)

Curated captions, cont.

560-569.98

Prehistoric life (adults)

560-567.8

Prehistoric life (children)

567.9-567.917

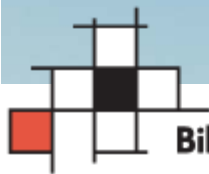
Dinosaurs (children)

567.918-569.98

Prehistoric life (children)

Curated captions, cont.

629.2	629.2	Kjøretøy	Kjøretøy
629.3	629.3	Teknikk	Teknikk
629.4	629.4	Romfart	Romfart
629.5	629.7	Teknikk	Teknikk
629.8	629.8	Teknikk	Roboter
629.9	629.9	Teknikk	Teknikk
630	633	Landbruk	Bondegårder
634	634.8	Landbruk	Natur
634.9	634.9	Landbruk	Natur
635	635	Hagebruk	Hage
636	636.9	Husdyr	Husdyr
637	638	Landbruk	Bondegårder
639	639	Jakt og fiske	Natur
640	640	Hus og hjem	Hus og hjem
641	642	Mat og drikke	Mat og drikke
643	645	Hus og hjem	Hus og hjem
646	646.6	Søm	Hobby
646.7	646.7	Hus og hjem	Hus og hjem
646.701	646.72	Kroppspølse	Kroppspølse
646.73	647.79	Familieliv	Familieliv
647.94	647.94	Hotell og pensjonat	Hus og hjem
647.95	647.95	Serveringssteder	Hus og hjem
647.96	649.0	Hus og hjem	Hus og hjem
649.1	649.7	Barn og familie	Barn og familie
649.8	649.9	Hus og hjem	Hus og hjem
650	651	Teknologi	Teknologi
652	652	Teknologi	Hobby
653	659	Teknologi	Teknologi



Biblioteksentralen

Still have **SOME** work to do with Dewey, though...

- Segmentation marks in the Norwegian WebDewey are based on the English language abridged version
- Doesn't always work for Norwegian libraries
- Some adjustments have been made
 - Norwegian literature
 - Norwegian history
 - Knitting
 - Sami languages
- We should systematically go through the schedules and adjust where necessary

● Who is “We”? The National Library? Emnedatakomitéen? Biblioteksentralen?

Questions?

elise.conradi@bibsent.no

