

EDUG Symposium
7 April 2011

The DDC in 2011

Joan S. Mitchell
Editor in Chief, DDC
OCLC
mitchelj@oclc.org



The world's libraries.
Connected.

- New editions
- Representations
- Distribution models
- How can we continue to work together on improving and exploiting Dewey as a knowledge organization system?

New Editions

WebDewey (SV) (22/swe)



Hem | Hjälp | Inställningar | Huvudklasser | Tabeller | Kontakta oss | Logga ut

SÖK AVANCERAD SÖKNING BLÄDDRA KOMMENTARER LÄNK TILL BIBLIOTEKSKATALOG

Svenska WebDewey (SV)

Sök UTFÖR

Bygg

6 / 19

371 Skolor och deras verksamhet; specialundervisning

- 300 Samhällsvetenskaper
- 370 Utbildning
- 371 Skolor och deras verksamhet; specialundervisning
 - 371.001 Philosophy and theory
 - 371.002 Miscellany
 - 371.003-371.005 Standard subdivisions
 - 371.006 Organizations
 - 371.007 Education, research, related topics
 - 371.008 History and description with respect to kinds of persons
 - 371.009 Historisk och geografisk aspekt, personer
 - 371.01-371.07 Särskilda slags skolor
 - 371.1-371.8 Skolor och deras verksamhet
 - 371.9 Specialundervisning

Anmärkningar

Standardindelningar tillfogas för skolor och deras verksamhet och specialundervisning tillsammans; för skolor och deras verksamhet tillsammans; för skolor ensamt

Klassificera här skolsystem, skolpolitik; övergripande verk om skolor, deras verksamhet och utbildningspolitiska frågor tillsammans

Klassificera skolor och deras verksamhet gällande primärutbildning, sekundärutbildning och vuxenutbildning under [372-374](#)

Klassificera skolor och deras verksamhet gällande högre utbildning under [378](#)

För läroplaner se [375](#)

För utbildningspolitiska frågor se [379](#)

Se maualen under [371 vs. 353.8](#), [371.2](#), [379](#)

Kommentarer

Indextermer (svenska)

- Skolor
- Skolororganisation
- Skolplaner
- Skolpolitik
- Undervisningsanstalter

Indextermer (engelska)

- All-age schools
- Educational institutions
- School organization
- School policy
- School systems
- Schools

Svenska ämnesord & namn

Indextermer (svenska/engelska)

- All-age schools
- Educational institutions
- School organization
- School policy
- School systems
- Schools
- Skolor
- Skolororganisation
- Skolplaner
- Skolpolitik
- Undervisningsanstalter

Fler mappade ämnesord

6 / 19

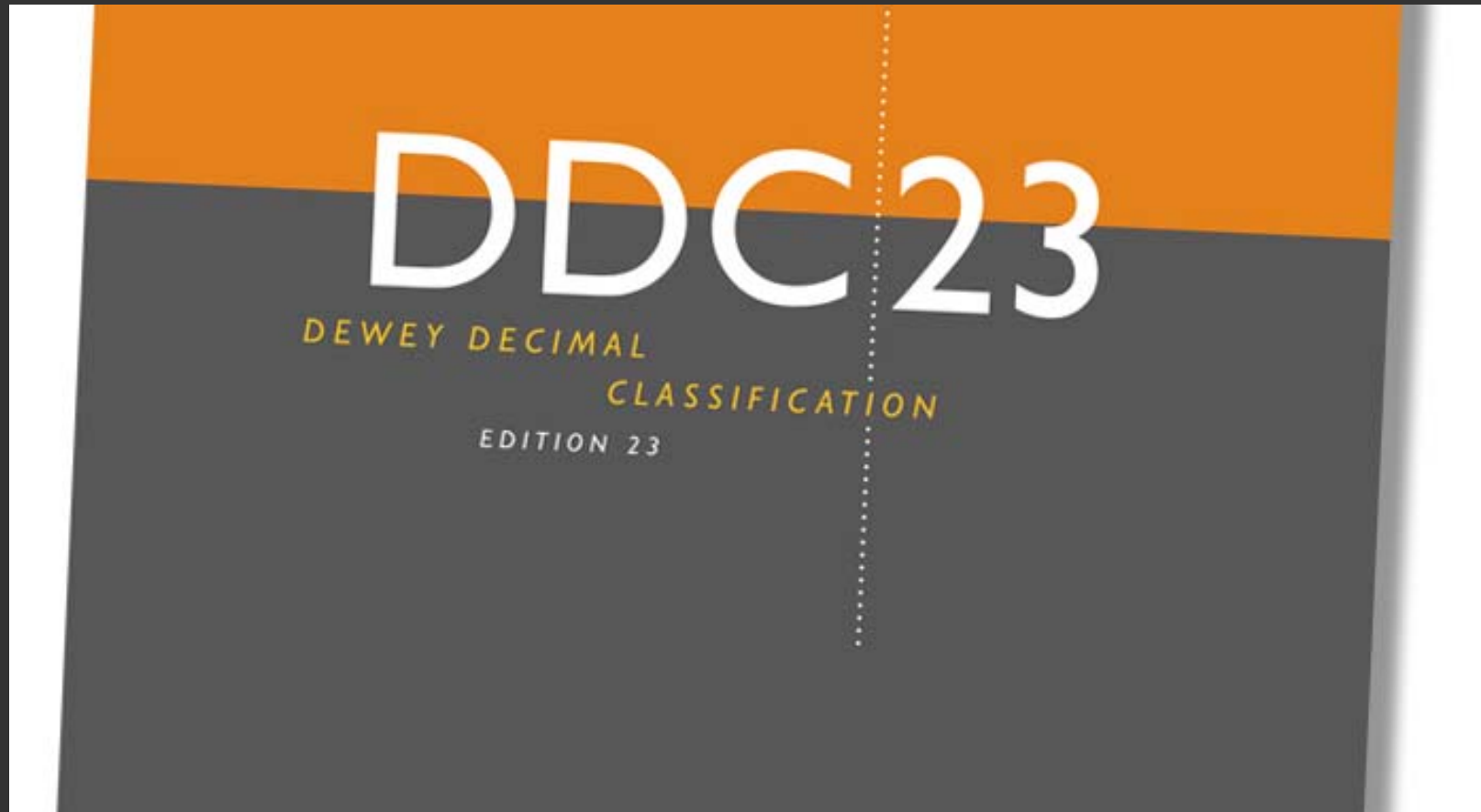
Huvudklasser

Hem [000](#) [100](#) [200](#) [300](#) [400](#) [500](#) [600](#) [700](#) [800](#) [900](#)

Tabeller

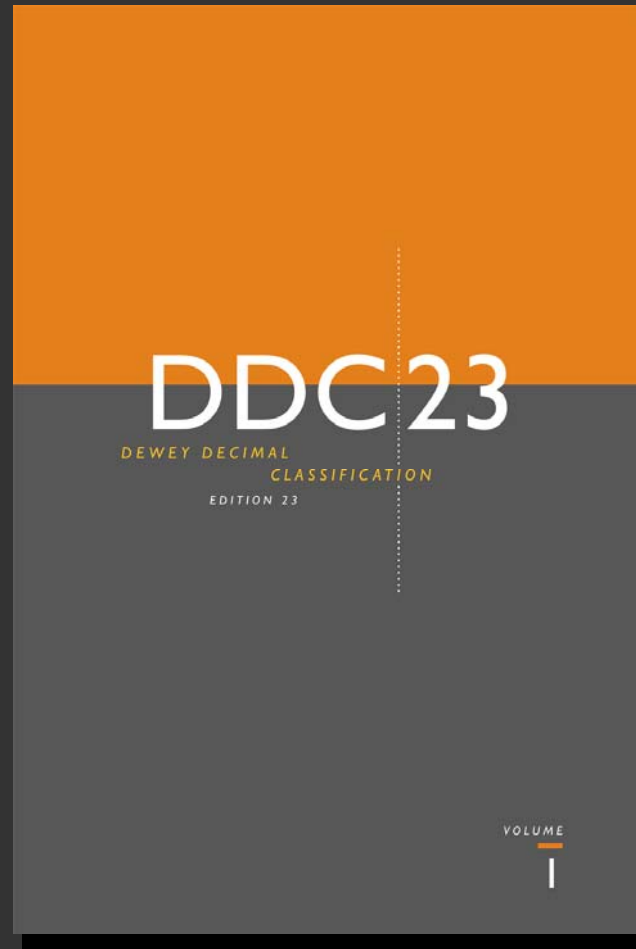
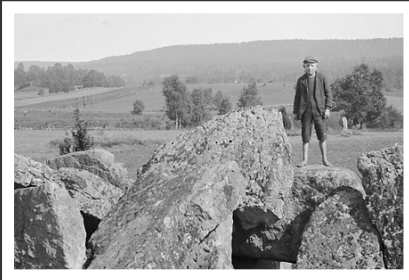
Hem [I1](#) [I2](#) [I3](#) [I3A](#) [I3B](#) [I3C](#) [I4](#) [I5](#) [I6](#)

DDC 23 is shipping soon!

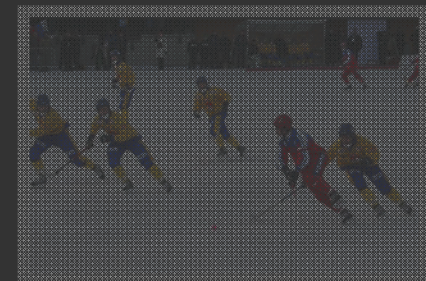
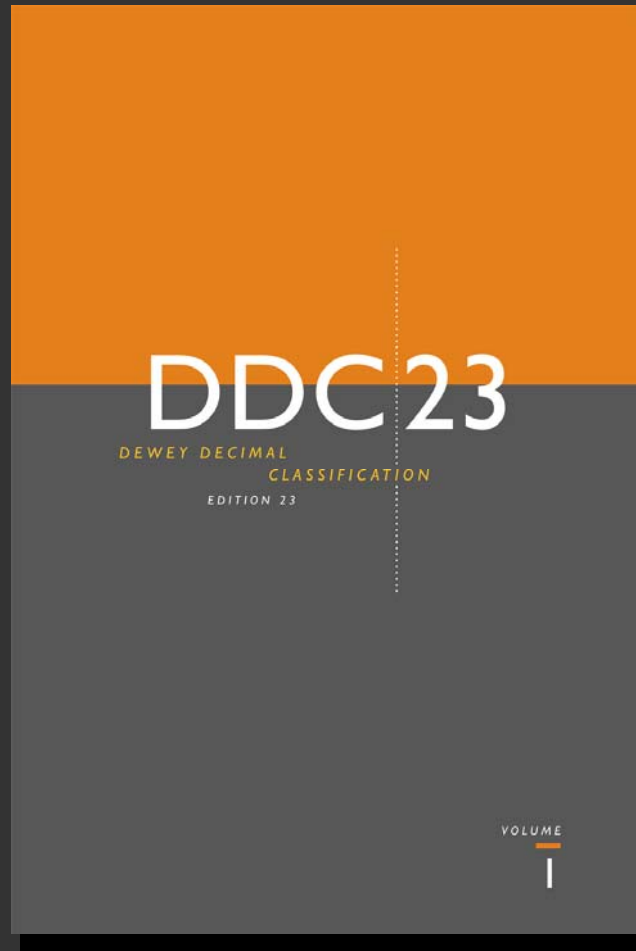
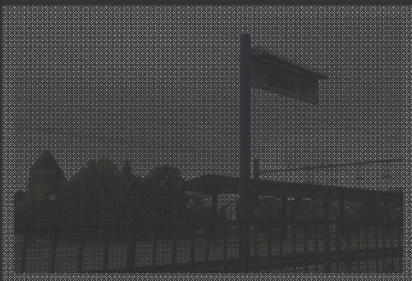
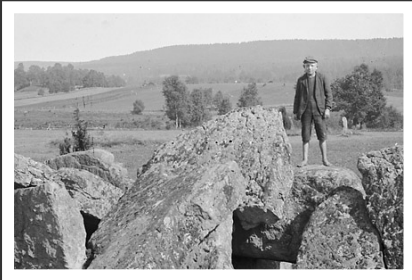


- Major updates in religion, law, education, food and clothing, graphic arts, cinematography and videography, ancient and modern world
- Overhaul of groups of people
- Structural changes to support machine display and retrieval, and classifier efficiency
- More details in [DDC 23 webinar](#) and upcoming workshops

Swedish Viewpoint in DDC 23



Ancient Sweden (T2—368+)

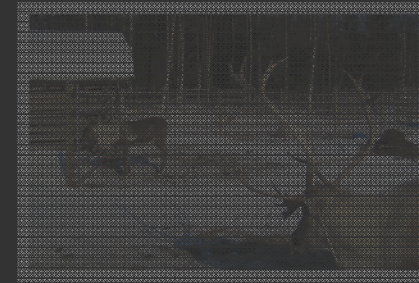
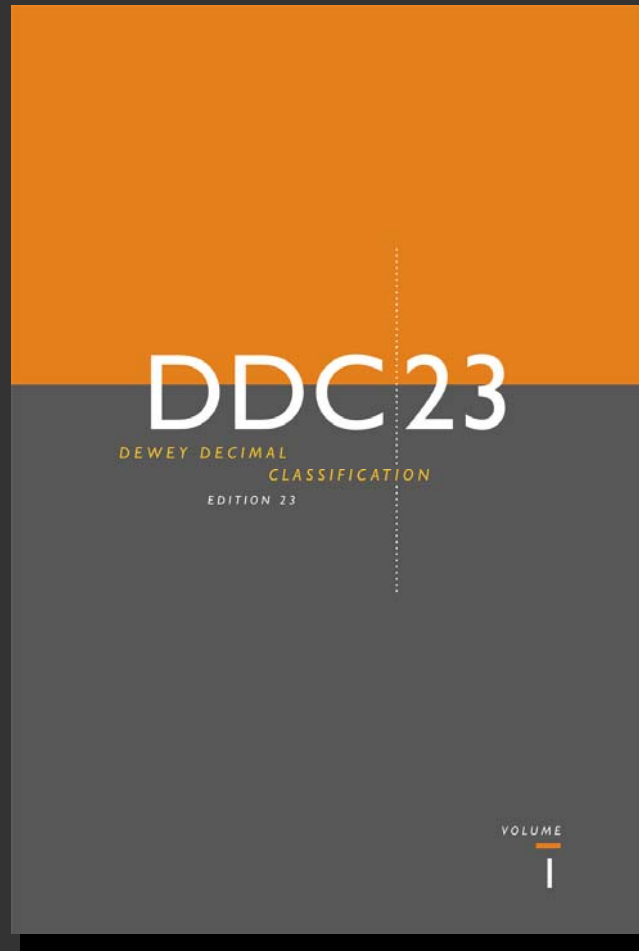


Ancient Sweden (T2—368+)



[flickr.com/photos/swedish_heritage_board/5435898820](https://www.flickr.com/photos/swedish_heritage_board/5435898820) by [Swedish National Heritage Board](#) on Flickr

Divisions of Sweden (T2—486, T2—487, T2—488)

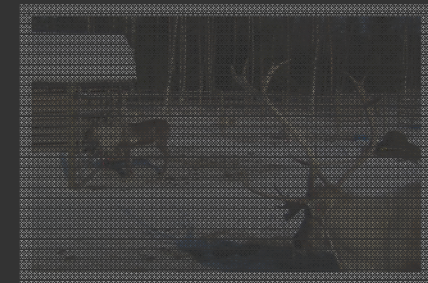
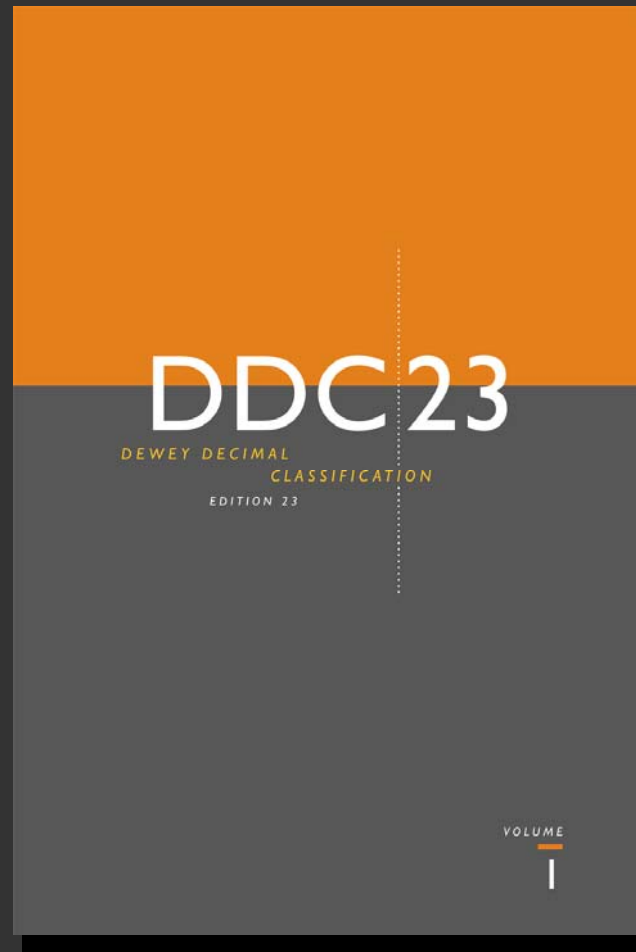


Divisions of Sweden (T2—486, T2—487, T2—488)



[flickr.com/photos/cityrat59/2866972917](https://www.flickr.com/photos/cityrat59/2866972917) by [anderssporning](#) on Flickr

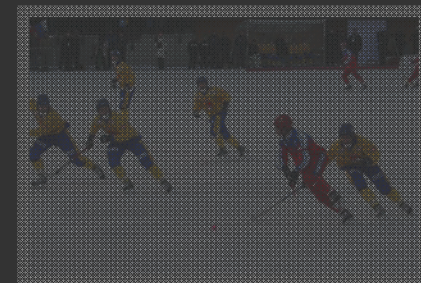
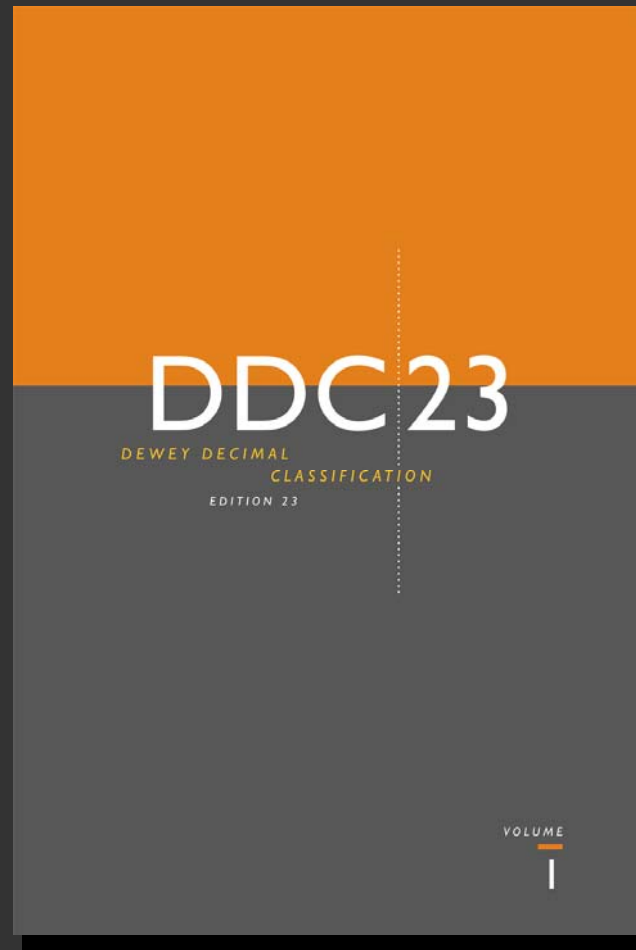
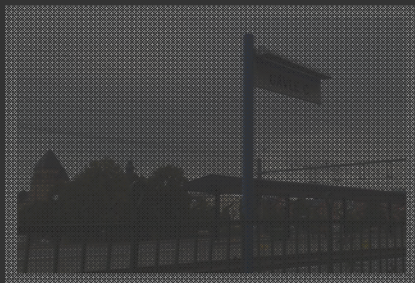
Sámi (T5—9457 & T6—9457)



Sámi (T5—9457 & T6—9457)



Reindeer farming (636.2948)

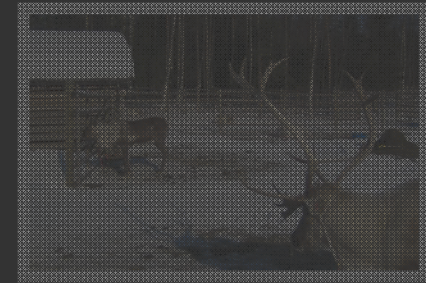
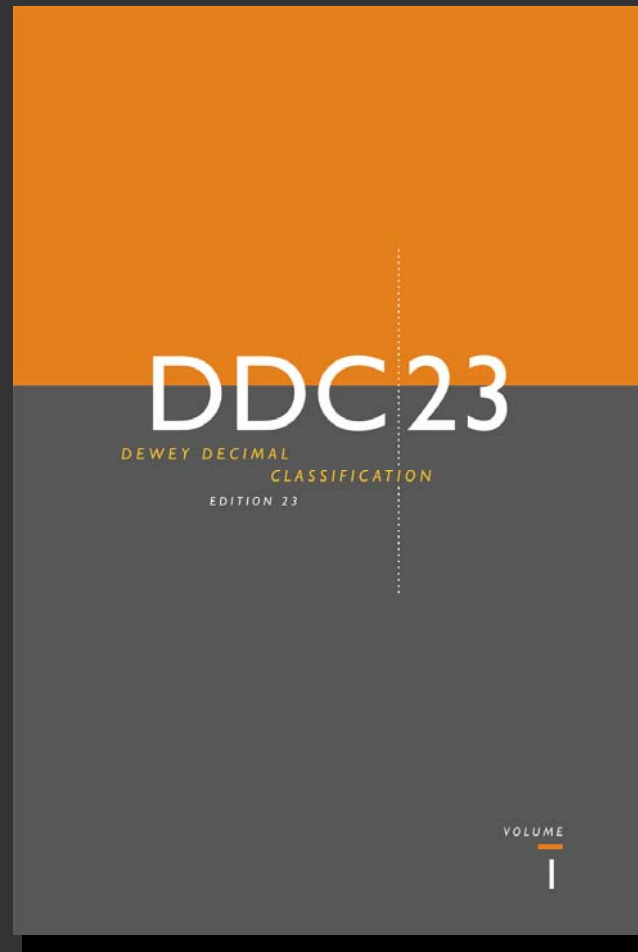


Reindeer farming (636.2948)



[flickr.com/photos/ezioman/2095766655](https://www.flickr.com/photos/ezioman/2095766655) by [ezioman](#) on Flickr

Bandy (796.963)



Bandy (796.963)



[flickr.com/photos/henrik_larsson/269283033/in/set-72157594327694557](https://www.flickr.com/photos/henrik_larsson/269283033/in/set-72157594327694557) by [henke_on](#) Flickr

Representations

- MARCXML
- Registry of DDC Editions
- WebDewey 2.0

MARCXML: Proposed Changes to the MARC 21 Formats



- Captions in DDC data fields (082 and 083 fields) in bibliographic format
- Geographic data (034 and 043 fields) in classification format
- Synthesized number components (085 field) in authority format
- Coding for “other” as type of edition in bibliographic, authority, and community information formats

English-language standard editions:

\$2 [edition number]

Translations of standard editions

\$2 [edition number / MARC language code]

Translations not tied directly to standard editions

\$2 [edition number or other identifier / MARC language code]

Registry of DDC Editions: Examples (1)



Number assigned by LC using DDC 22:

082 00 \$a 839.82/374 \$2 22

Number assigned by LC using Abridged Edition 14:

082 10 \$a 839.82 \$2 14

Number assigned by Norwegian library using DDC 22:

082 04 \$a 839.82/374 \$2 22 \$q [assigning agency]

Number assigned by Swedish library using WebDewey (SV):

082 04 \$a 839.82374 \$2 22/swe \$q [assigning agency]

Number assigned by Norwegian library using DDK 5:

082 84 \$a 839.82 \$2 5/nor \$q [assigning agency]

English-language standard editions

<http://dewey.info/class/839/e22/about>

<http://dewey.info/class/839/a14/about>

Translations of standard editions

<http://dewey.info/class/839/e22/about.sv>

Translations not tied directly to standard editions

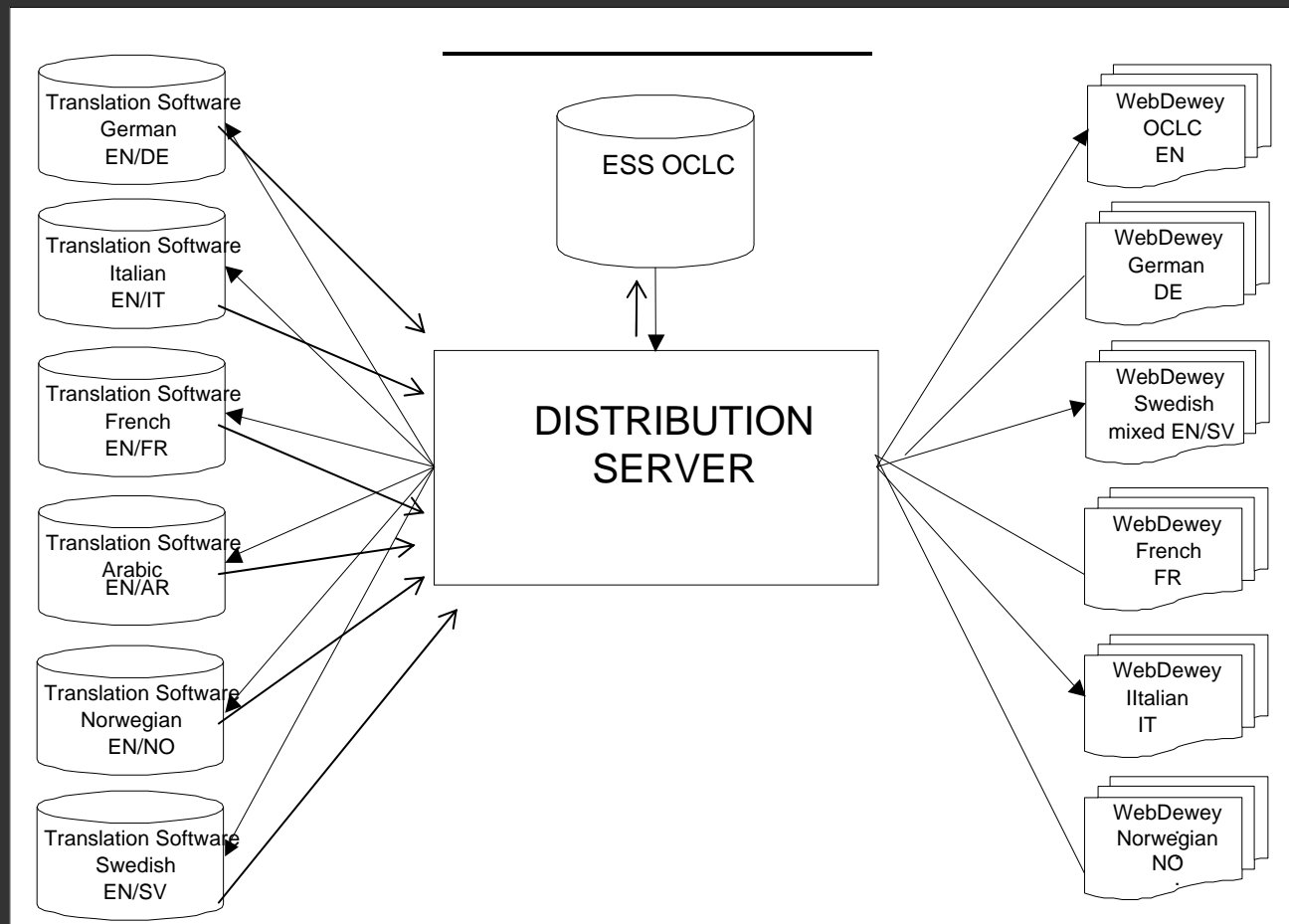
<http://dewey.info/class/839/x5/about.no>

- Interface improvements (e.g., browse as default, built number identification, identification of important notes)
- Functionality improvements (e.g., number-building assistance, user-contributed content, history of numbers, new content notification)

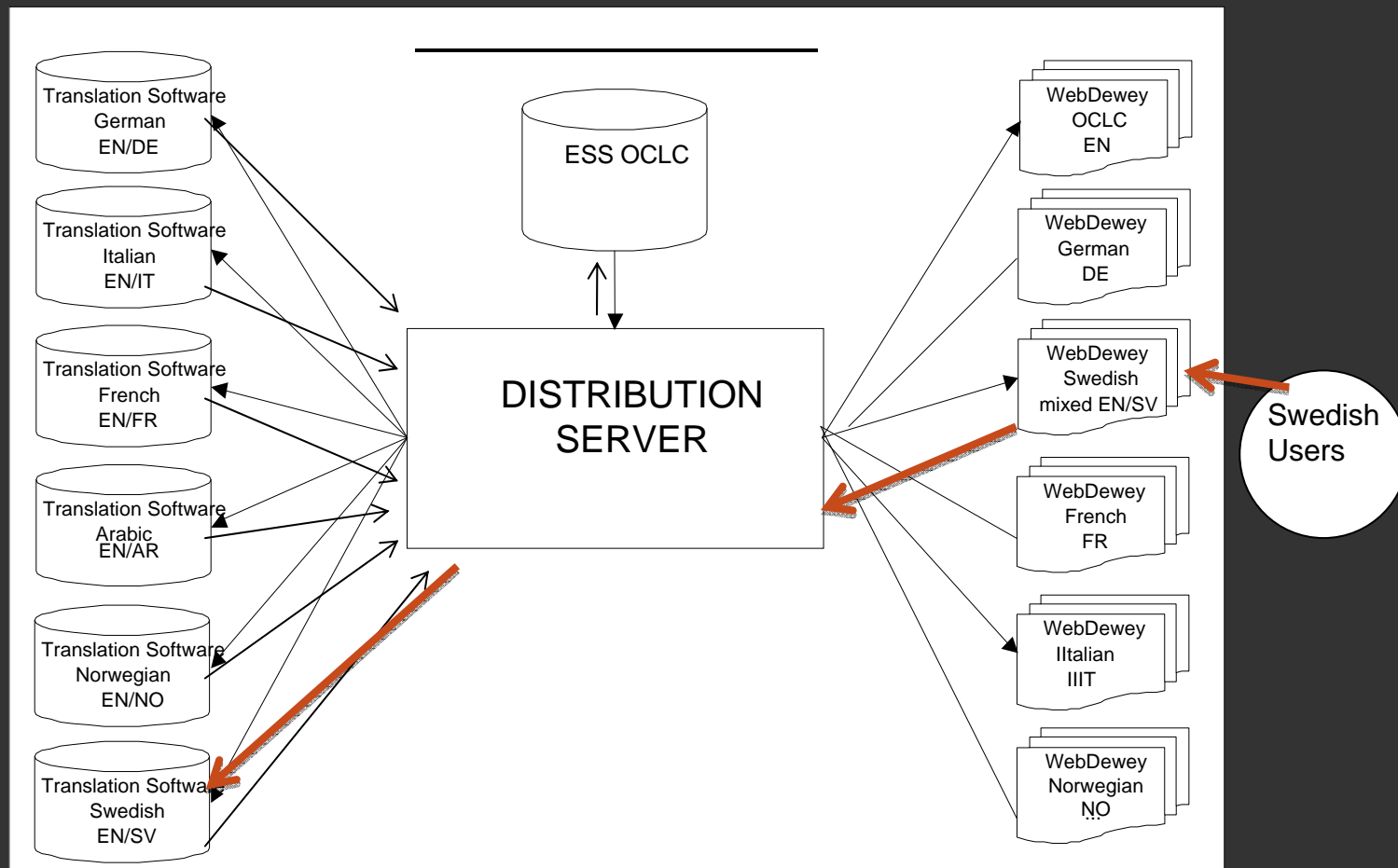
Distribution Models

- DDC data within language editions
- DDC data among language editions
- Linked data

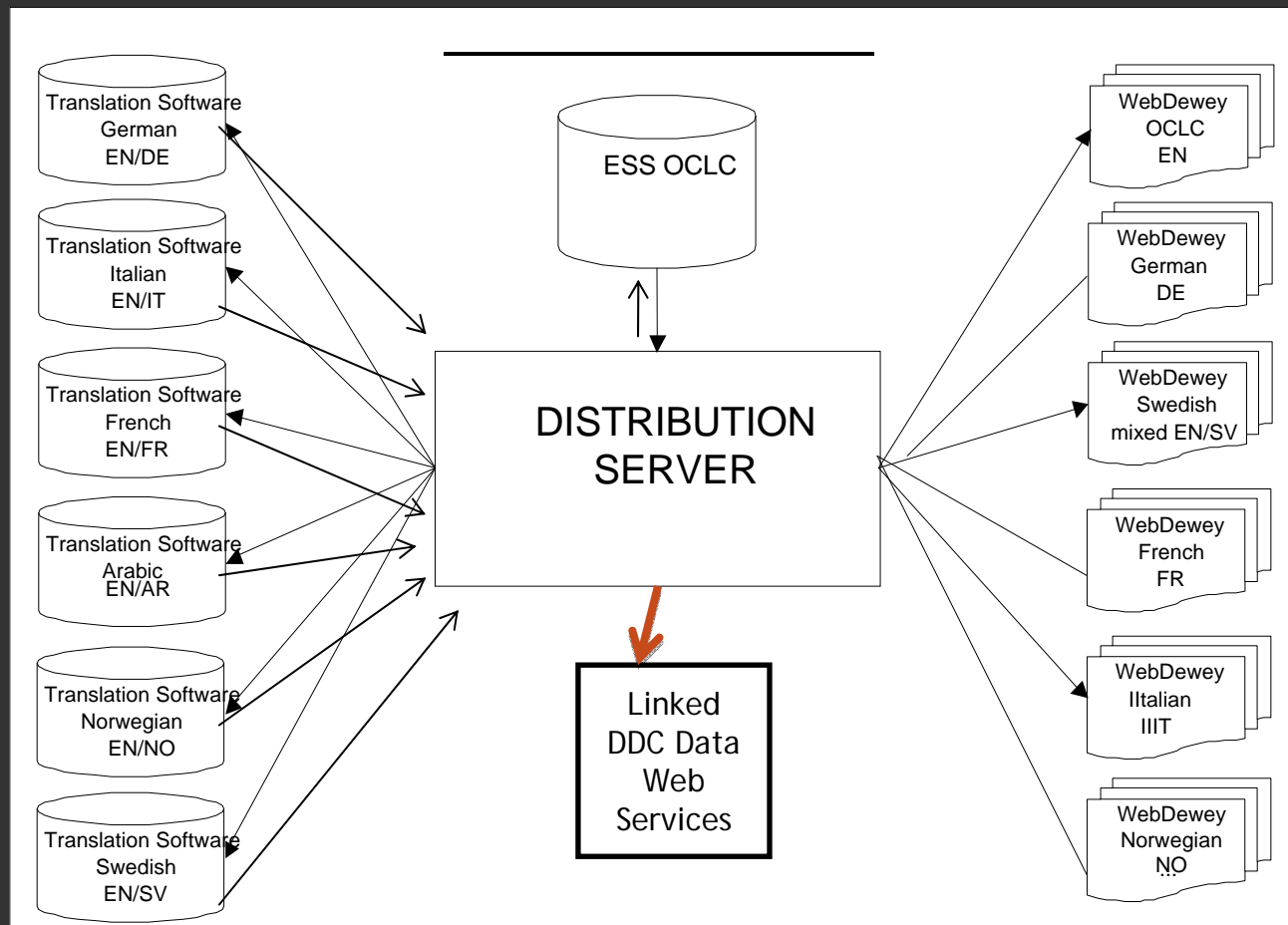
DDC distribution model



User-contributed Content



Linked Data Web Services



How Can We Work Together?

How Can We Work Together?



- Contribute to the Dewey development agenda
- Associate content and terminology with the DDC
- Experiment with linked DDC data
- Identify new tools and uses based on the DDC

Thank You!
Tack!

Questions?

Some Useful Links



DDC 23	oclc.org/us/en/info/ddc23
DDC 23 workshop	registration.oclc.org/reg/?pc=DDC23JunWkshp
DDC 23 webinar	http://tinyurl.com/3cyqn7q
WebDewey 2.0	oclc.org/dewey/resources/tutorial
dewey.info	http://dewey.info
DeweyBrowser	oclc.org/research/researchworks/ddc/browser.htm
Classify	classify.oclc.org/classify2
<i>025.431: The Dewey blog</i>	http://ddc.typepad.com
Questions?	dewey@loc.gov (Dewey Editorial Office) dewey@oclc.org (Licensing, group purchases, LIS program)